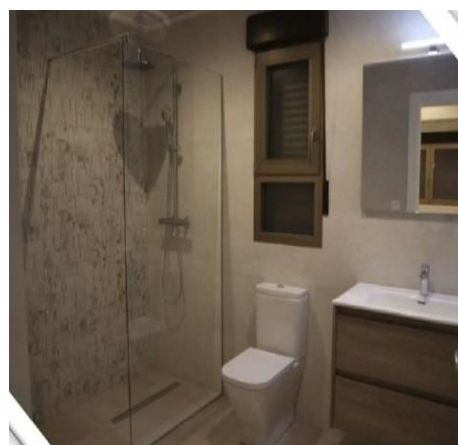




ENERGY RATING

B



Ref.: 2-62425

## Villa Aspe

# 359.000€



3 Bedrooms



2 Baths



141m<sup>2</sup> Floor-  
plan



420m<sup>2</sup> Plot



Pool

• Air Conditioning: Pre-Installed • Beach: 36000 Meters • Double Bedrooms: 3 • Garden • Gated • Location: Rural • Number of Parking Spaces: 1 • Private Pool • Terrace: 20 Msq. • Useable Build Space: 115 Msq.