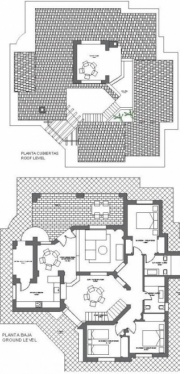




ENERGY RATING **B**

OCAZACION



SIZE 14: 818m ²	SUPERFICIE UTILIZABLE AREA: 169.89m ²
SIZE 39: 859m ²	SUF. CONSTRUIDA CUBIERTEN: 162.75m ²
SIZE 10: 886m ²	COVERED BUILT AREA
SIZE 25: 846m ²	SUF. CONSTRUIDA TOTAL: 205.24m ²
SIZE 18: 856m ²	TOTAL BUILT AREA
SIZE 7: 843m ²	

Ref.: 2-11979

Detached House / Villa Fuente Álamo (Las Palas)

339.000€



3 Bedrooms



2 Baths



205m² Floor-plan



843m² Plot

- Air Conditioning: Pre-Installed • Beach: 7500 Meters • Double Bedrooms: 3 • Garden • Gated • Key ready • Location: Coastal, Rural, Urbanisation • Near Golf / Golf Resort Property • Number of Parking Spaces: 1 •