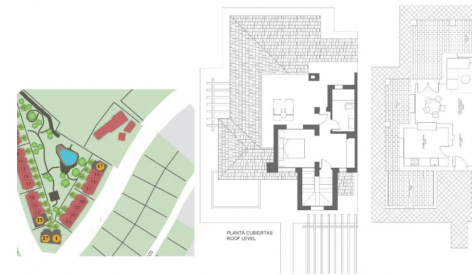


ENERGY RATING **B**



SIZE 1: 553m <sup>2</sup>	PARCELA PLOT SIZE 1: 610m <sup>2</sup>	SUPERFICIE ÚTIL USABLE AREA: 178.57m <sup>2</sup>
SIZE 2: 356m <sup>2</sup>	PARCELA PLOT SIZE 2: 463m <sup>2</sup>	SUPERFICIE ÚTIL USABLE AREA: 156.77m <sup>2</sup>
SIZE 3: 531m <sup>2</sup>	PARCELA PLOT SIZE 3: 444m <sup>2</sup>	SUPERFICIE ÚTIL USABLE AREA: 216.91m <sup>2</sup>
TOTAL BUILT AREA		



Ref.: 2-84281

## Detached House / Villa Fuente Álamo (Las Palas)

# 252.000€



3 Bedrooms



2 Baths



217m<sup>2</sup> Floor-plan



356m<sup>2</sup> Plot

- Air Conditioning: Pre-Installed • Beach: 7500 Meters • Double Bedrooms: 3 • Garden • Gated • Key ready • Location: Coastal, Rural, Urbanisation • Near Golf / Golf Resort Property • Number of Parking Spaces: 1 •