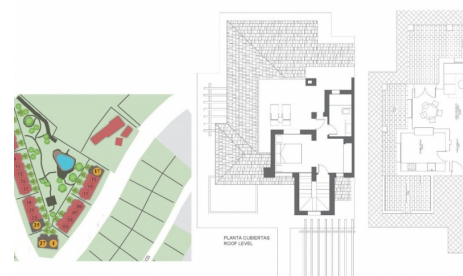


ENERGY RATING **B**



SIZE 1: 553m ²	PARCELA PLOT SIZE 1: 610m ²	SUPERFICIE ÚTIL USABLE AREA: 178.37m ²
SIZE 2: 356m ²	PARCELA PLOT SIZE 2: 463m ²	SUPERFICIE ÚTIL USABLE AREA: 156.77m ²
SIZE 3: 531m ²	PARCELA PLOT SIZE 3: 444m ²	SUPERFICIE ÚTIL USABLE AREA: 216.91m ²
TOTAL BUILT AREA		



Ref.: 2-84281

Detached House / Villa Fuente Álamo (Las Palas)

252.000€



3 Slaapkamers



2 Badkamer



217m² Bruikbaar



356m² Land

- Air Conditioning: Pre-Installed • Beach: 7500 Meters • Double Bedrooms: 3 • Garden • Gated • Key ready • Location: Rural, Urbanisation • Number of Parking Spaces: 1 • Parking - Space • Terrace: 55 Msq.